

Dura Trench

manufactured by Eric'sons

SPECIFICATION SHEET

DESCRIPTION:

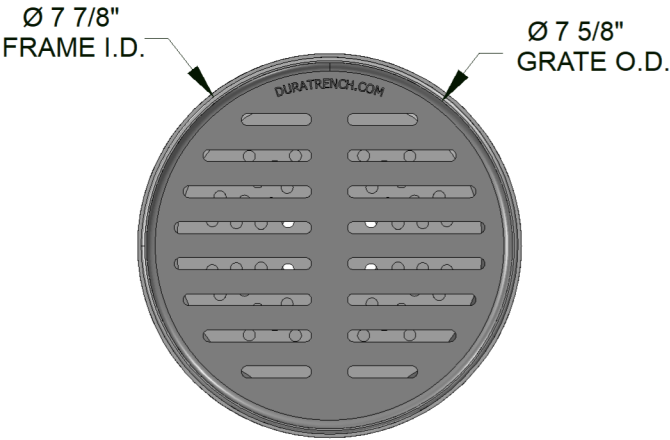
MEDIUM DUTY FLOOR DRAIN

SELECT COVER/GRATE TYPE:

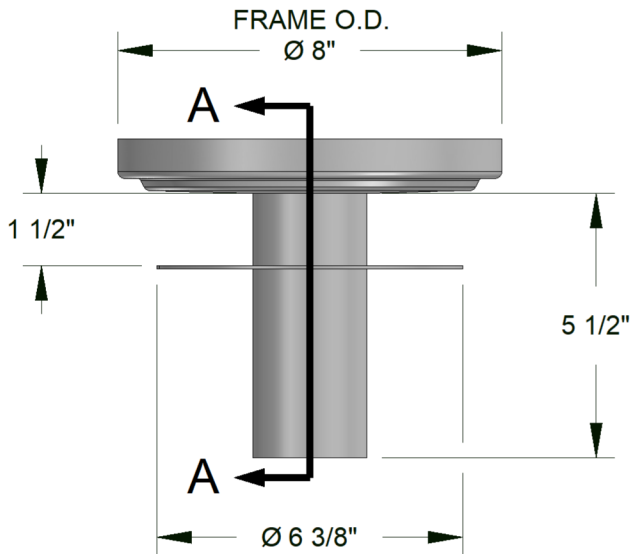
- ☐ LINEAR SLOTTED PATTERN (C)
- ☐ RADIAL SLOTTED PATTERN (B)
- ☐ PERFORATED PATTERN (E)
- ☐ SOLID COVER (A)

SELECT PIPE SIZE:

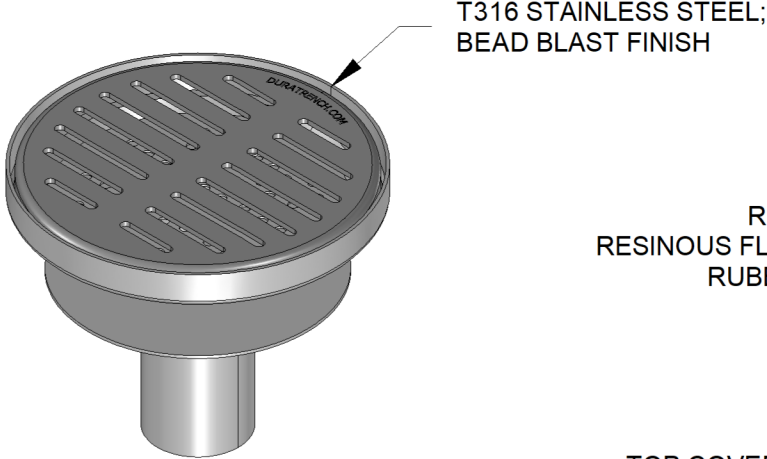
- ☐ 2"
- ☐ 3"
- ☐ 4"



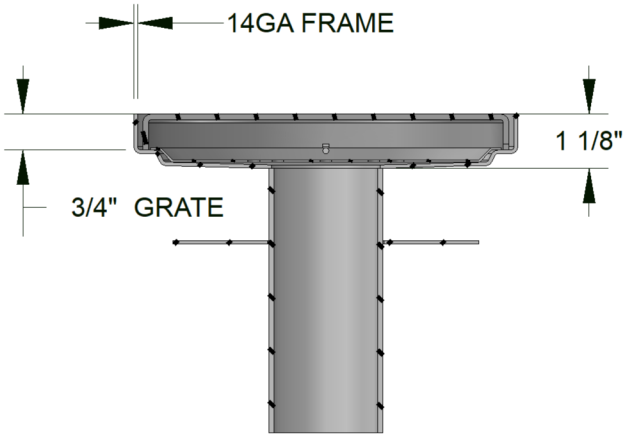
MD FLOOR DRAIN ASSEMBLY
TOP VIEW



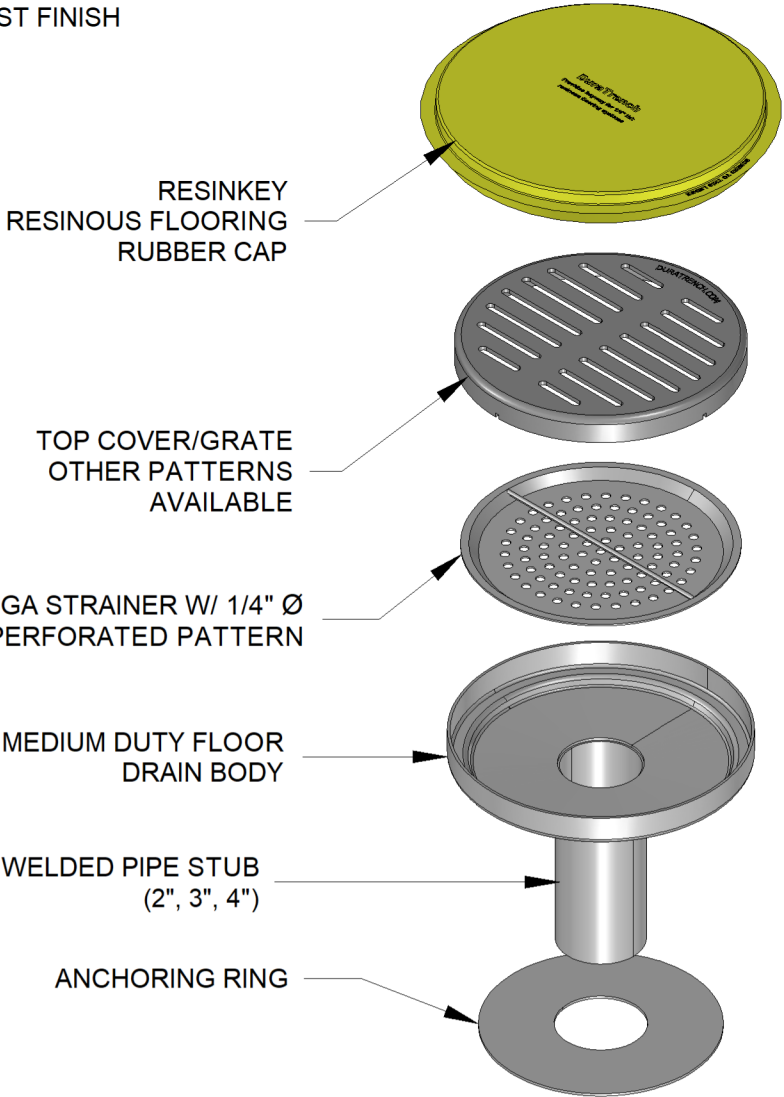
MD FLOOR DRAIN ASSEMBLY
SIDE VIEW



MD FLOOR DRAIN ASSEMBLY
ISOMETRIC VIEW



MD FLOOR DRAIN ASSEMBLY
SECTION A-A



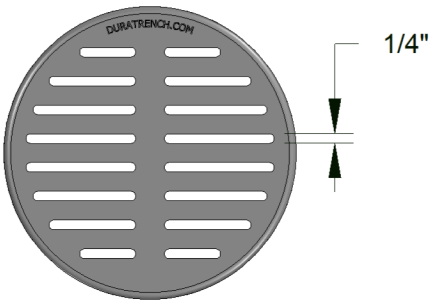
MD FLOOR DRAIN ASSEMBLY
EXPLODED ISOMETRIC VIEW

PRODUCT DATA

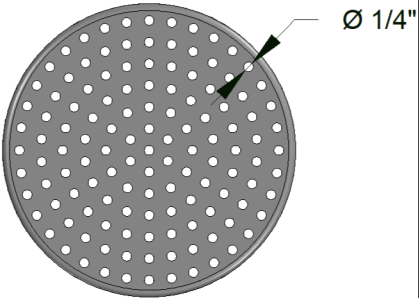
MATERIAL:	T316 STAINLESS STEEL		
FINISH:	BEAD BLAST		
<u>LOAD RATINGS</u>			
ASME:	MEDIUM DUTY		
PHONE: 770-505-6575		MODEL BY:	KM
296 INDUSTRIAL BLVD. N. DALLAS, GA 30132		DRAWING BY:	KM
		REVIEWED BY:	LRC
222 WEST 33RD ST. OGDEN, UT 84401		DATE:	04/26/2024
13300 RAMBLEWOOD DR. CHESTER, VA 23836		SCALE:	NTS
		REV # :	0

WWW.DURATRENCH.COM

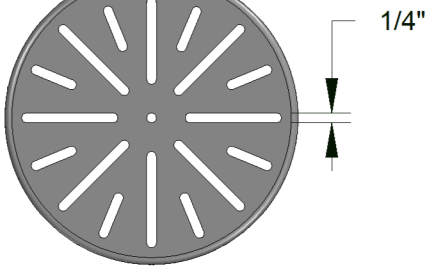
TOP COVER/GRATE OPTIONS



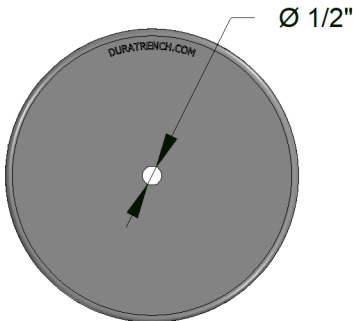
LINEAR SLOTTED PATTERN



PERFORATED PATTERN



RADIAL SLOTTED PATTERN



SOLID COVER

TOLERANCES
FRACTIONAL = ± 1/8"
ANGULAR = ± 0.5°